

Printer Install Instructions: MacOS - HP Printers

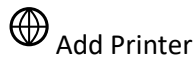
The name of the physical printer can be found on a label in this format:

Example: **CLS_WIL205_HP402.msu.montana.edu**

1. Please make sure that you're on MSU-Secure wifi or wired network.

2. Click the Apple logo on the top right corner of the screen and select "System Settings."

3. Select "Printers and Scanners" then select the Add Printer button.

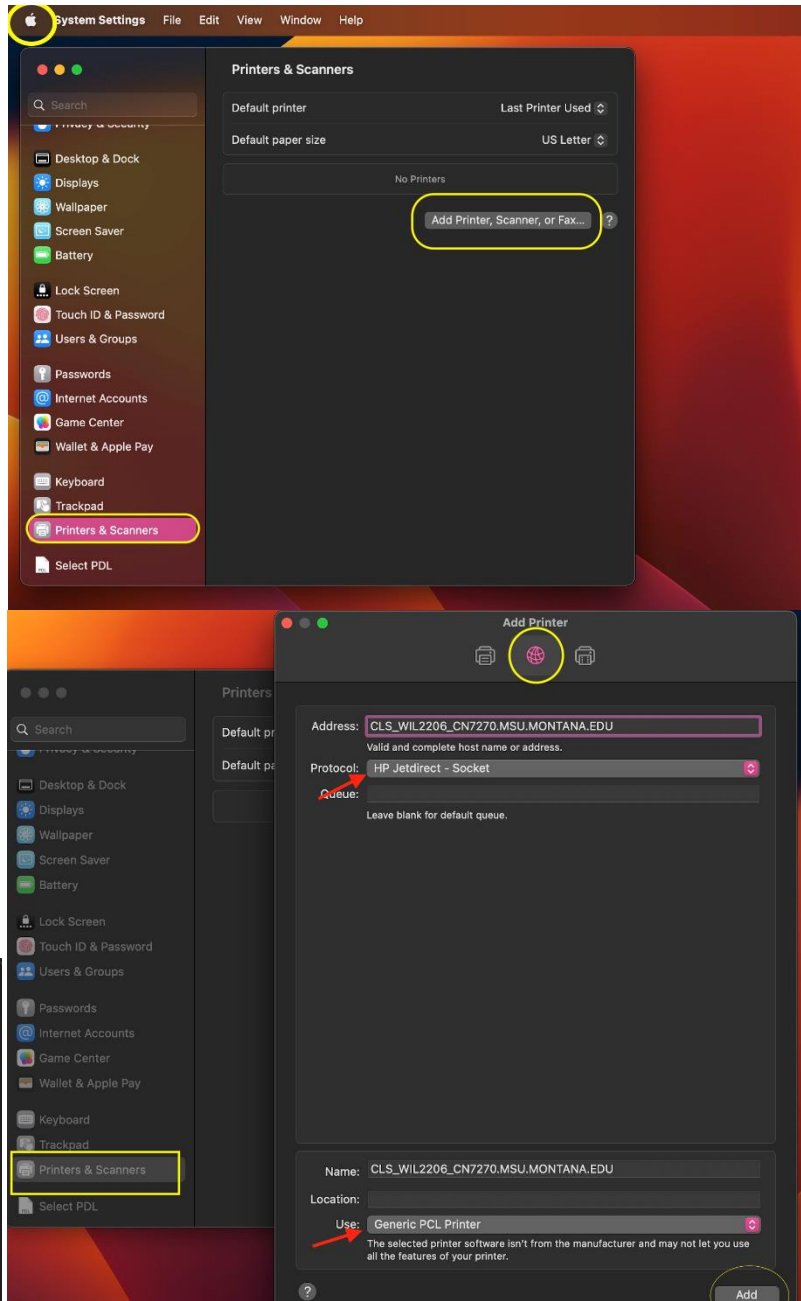


4. Select the IP tab (globe icon) and input the printer's name in the Address column

5. **Protocol column:** Make sure HP Jetdirect - socket is chosen.

6. **Under Use:** Click on the drop down and select "Generic PCL Printer"

7. Then click "Add". When you see the next window pop up click "ok"



Not all printers are the same, or can be setup the same way, but using these instructions should work in most cases. If you have any trouble at all during this process, or have any questions, please let us know at (406) 994-5551 or ext. 5551