

MACDEP NEWS

MONTANA ASSOCIATION OF COMMUNITY DEVELOPMENT EXTENSION PROFESSIONALS

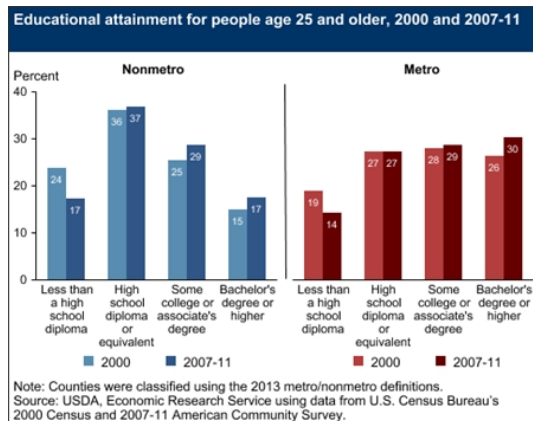
December 2013

Reports & Resources

Rural Education on the Rise

USDA | [READ STORY](#)

Rural education achievement numbers are improving. The percentage of the population in non-metropolitan areas without a highschool degree has dropped in the past ten years, such that the rural numbers are approximating the metro numbers. Rural areas still show significantly fewer bachelor's degrees than metropolitan areas, however.



The Decline of American Mobility

Atlantic Cities | [READ STORY](#)

This story by Atlantic Cities reports on data recently released by the U.S. Census Bureau, showing that

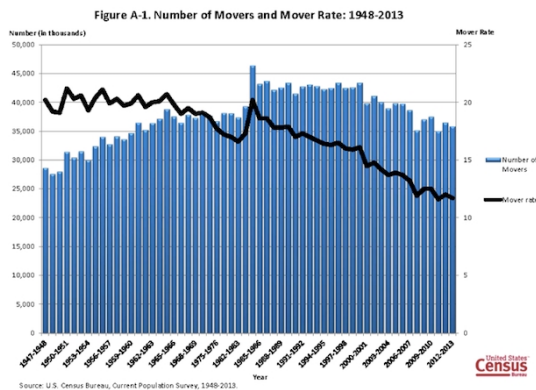
President's Corner

The deadline for submissions to present at the [Community Development Society](#) 2014 Conference (July 20-23, 2014, Dubuque, IA) is Jan. 31, 2014. [Click here](#) for more information. The Call for Nominations for the Community Development Society Board of Directors has been announced. Please contact any of the current roster of the [Board of Directors and Officers](#) for more information.

It is time to vote for your 2014 NACDEP [Board of Directors](#). Directors will take office on June 23, 2014 with their term extending to the 2015 NACDEP annual conference. Elections close on Dec. 16.

-Paul Lachapelle
MACDEP President

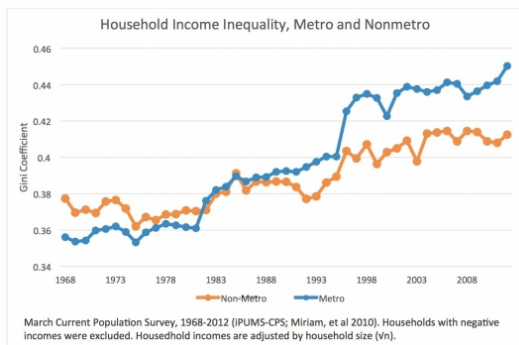
mobility in the United States is at its lowest since the 1940's. This trend has been exacerbated by the recent economic recession, but is due in larger part to a rapidly aging population and increasing rates of home-ownership.



Rural Communities and Income Inequality

Daily Yonder | [READ STORY](#)

This report by the Daily Yonder provides a mixed picture of income inequality in rural areas. Although the income gap between rich and poor in rural areas has increased over recent decades, it is nevertheless the case that income inequality in rural areas is less severe than it is in metropolitan areas.



Global Consensus on Inequality

Pew Research | [READ STORY](#)

This report by the Pew Research Fact Tank analyzes data on recent trends in global income inequality. The report also shows that high-income elites from around

Upcoming Events

Community Development Extension Institute

February 26-28, 2014
Boise, ID
Sponsor: CDEI

2014 National Interagency Community Reinvestment Conference

March 30-April 2, 2014
Chicago, IL
Sponsor: Federal Reserve Bank of San Francisco, et al.

International Association for Community Development

June 9-11, 2014
Glasgow, Scotland
Sponsor: International Association for Community Development

Grants, Awards & Jobs

Education, Community and Health Grants for FY13

Deadline: Open
Funder: RGK Foundation

Second Chance Fund

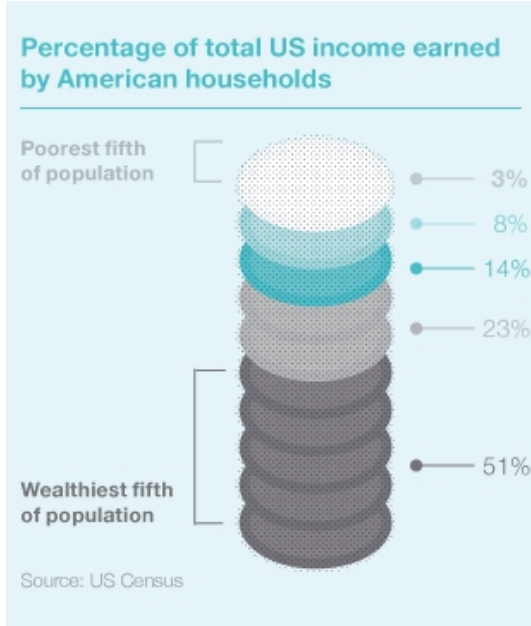
Deadline: Open
Funder: American Humane Society

K-12 Education Programs with a Focus on Math, Science and Environmental Science

Deadline: Open
Funder: Toyota U.S.A. Foundation

Community Development Block Grant - Economic

the world feel that income inequality is one of the most pressing contemporary social and economic problems -- an attitude unreflected in public policy.



Development Program (CDBG-ED)

Deadline: Open
Funder: MT Department of Commerce

National/International News

States Employ Inmates to Combat Forest Fires

New York Times; November 26

Salt Lake City to Build \$125M Solar Farm

Salt Lake Tribune; November 26

U.S. Methane Emissions Exceed Predicted Levels

New York Times; November 25

Utah Wilderness Vandalism Law in the Works

Salt Lake Tribune; November 24

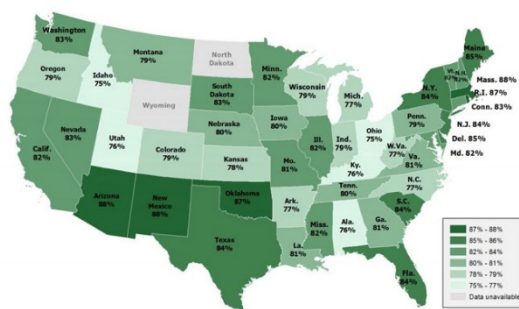
Gas Drilling Not to Blame for Wyoming Contamination

Star Tribune; November 22

The End of the Climate Change Debate?

Stanford Woods | [READ STORY](#)

Contrary to popular conviction, attitudes toward climate change do not map cleanly across party lines. This study by Stanford Woods shows that a majority of residents surveyed in every U.S. believe that global warming has been occurring, and that the U.S. should take action to limit its greenhouse emissions.



Montana News

MT Brine Spill Contaminates ND Creek

Billings Gazette; November 26

Roadkill Salvage Permits Available

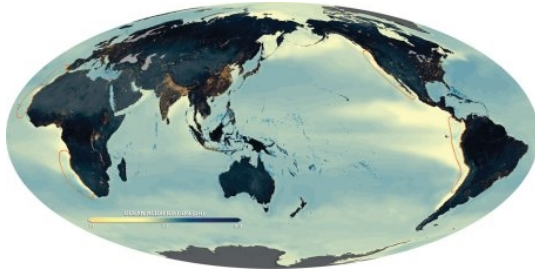
Missoulian; November 26

Layoffs at Whitehall Gold Mine Due to Gold Prices

Ocean Acidification

[IGBP | READ STORY](#)

The rate at which the world's oceans are acidifying is "unprecedented," scientists warn in this [new report](#). The rate may be faster than at any time in the last 300 million years, they say. This summary for policymakers reports on the state of scientific knowledge on ocean acidification, based on the latest research presented at The Third Symposium on the Ocean in a High-CO₂ World, held in Monterey, California, in September 2012.



Montana Standard; November 26

[MT Big Game Hunting Seasons Nears End](#)

Missoulian; November 25

[Climate Change May Threaten Big Game Animals](#)

Great Falls Tribune; November 23



MSU Extension Community Development | Wilson Hall 2-117 P.O. Box 172240 | Bozeman, MT 59717-2240

Tel: (406) 994-3620

Back issues of the MACDEP E-news are available [here](#)

To subscribe to the Montana CD E-Newsletter, send a request to: commdev@montana.edu