

How Big is Your Tree

Estimating Board Feet in a Tree

Determine the number board feet in your tree

The forester measures the tree diameter and the tree height. From these two measurements a forester can determine how much lumber is in a tree, and thereby predict how much wood is in a particular timber area. The unit of wood that a forester wants to know is called a 'board foot'. A board foot is one foot by one foot by one inch thick.

Vocabulary

board foot (BF): a piece of wood one foot by one foot by one inch.

cubic foot (sq.ft.): a piece of wood one foot by one foot by one foot.

DBH: tree diameter at breast height considered to be 4.5 feet from the ground.

circumference (C): length around a circle.

diameter (D): measure of a straight line segment that passes through the center of a circle.

radius (r): one half the diameter of a circle.

pi (π): The mathematical constant that is the ratio of the circle's circumference to its diameter or 3.14.

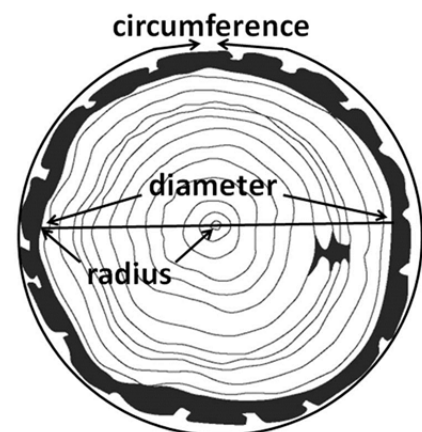
area (A): measurement of a surface.

volume (V): the amount of 3-dimensional space an object occupies.



Procedure

1. Measure the DBH of your tree. Circumference in inches divided by pi ($\pi = 3.14$) or use a diameter tape ($C/\pi = \text{DBH}$).
2. Measure the height of your tree in feet.
3. Find the radius of the tree ($r = \text{DBH}/2$). Divide the DBH by 2. Convert the units from inches into feet by dividing by 12 ($r = \text{DBH}/2/12$).
4. Find the area of the cross-section of your tree at DBH ($A = \pi r^2$).
5. Find the volume of the tree in cubic feet ($V = A \times \text{height}/4$). Note: 4 is used to account for the taper of the tree.
6. Find the board foot volume of the tree. Divide the cubic feet by 12 ($\text{BF} = V/12$). Note: Foresters usually use a conversion factor of 6 or 7 instead of 12 to provide for kurl, loss from saw dust, etc., during the cutting process.



Board Footage Data Sheet

Tree # _____

Tree species: _____

1. Height _____ feet.
 2. DBH _____ inches: $(DBH=C\pi) = \text{circumference} \text{ ____ inches} \times 3.14 = \text{ ____ inches DBH.}$
 3. Radius in feet: $DBH \text{ ____ inches} / 2 = \text{ ____ inch radius} / 12 = \text{ ____ foot radius.}$
 4. Area of tree cross-section: $(A=\pi r^2) = 3.14 \times (\text{ ____ foot radius} \times \text{ ____ foot radius}) = \text{ ____ sq.ft. radius.}$
 5. Volume of tree in cubic feet: $(V=Ah/4) \text{ ____ sq. ft. radius} \times \text{ tree height} / 4 = \text{ ____ cu.ft.}$
 6. Volume of tree in board feet: $(V/12) = \text{ ____ cu.ft.} \times 12 = \text{ ____ board feet.}$
-

Tree # _____

Tree species: _____

1. Height _____ feet.
 2. DBH _____ inches: $(DBH=C\pi) = \text{circumference} \text{ ____ inches} \times 3.14 = \text{ ____ inches DBH.}$
 3. Radius in feet: $DBH \text{ ____ inches} / 2 = \text{ ____ inch radius} / 12 = \text{ ____ foot radius.}$
 4. Area of tree cross-section: $(A=\pi r^2) = 3.14 \times (\text{ ____ foot radius} \times \text{ ____ foot radius}) = \text{ ____ sq.ft. radius.}$
 5. Volume of tree in cubic feet: $(V=Ah/4) \text{ ____ sq. ft. radius} \times \text{ tree height} / 4 = \text{ ____ cu.ft.}$
 6. Volume of tree in board feet: $(V/12) = \text{ ____ cu.ft.} \times 12 = \text{ ____ board feet.}$
-

Tree # _____

Tree species: _____

1. Height _____ feet.
2. DBH _____ inches: $(DBH=C\pi) = \text{circumference} \text{ ____ inches} \times 3.14 = \text{ ____ inches DBH.}$
3. Radius in feet: $DBH \text{ ____ inches} / 2 = \text{ ____ inch radius} / 12 = \text{ ____ foot radius.}$
4. Area of tree cross-section: $(A=\pi r^2) = 3.14 \times (\text{ ____ foot radius} \times \text{ ____ foot radius}) = \text{ ____ sq.ft. radius.}$
5. Volume of tree in cubic feet: $(V=Ah/4) \text{ ____ sq. ft. radius} \times \text{ tree height} / 4 = \text{ ____ cu.ft.}$
6. Volume of tree in board feet: $(V/12) = \text{ ____ cu.ft.} \times 12 = \text{ ____ board feet.}$