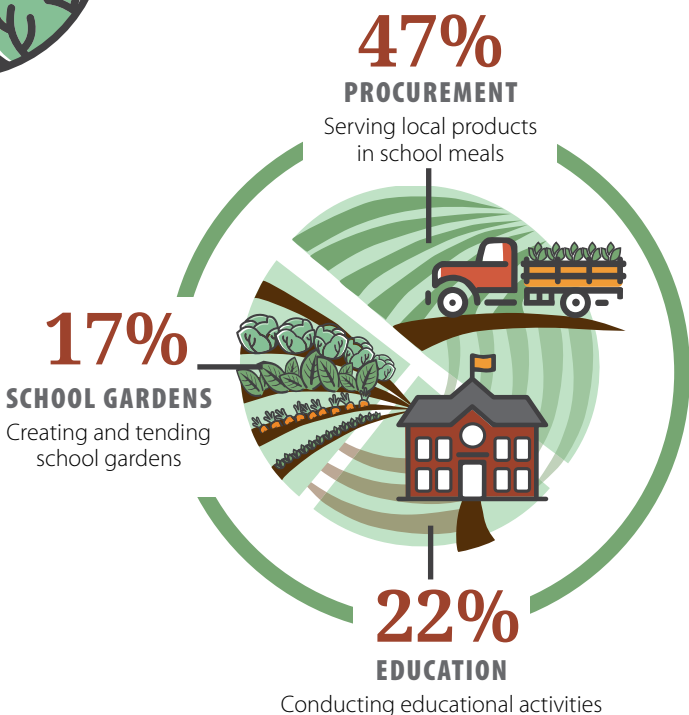
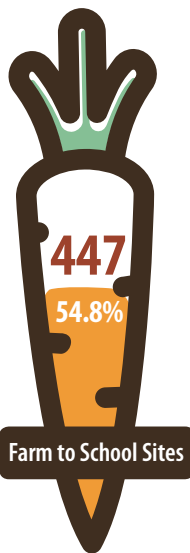




**MONTANA
FARM TO
SCHOOL**

Montana Farm to School Annual Report

Academic Year 2018-2019



WHAT

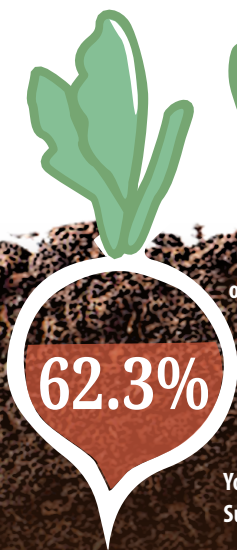
What is farm to school?

Farm to school enriches the connection communities have with fresh, healthy food and local food producers by changing food purchasing and education practices at K-12 schools and preschools. Students gain access to healthy, local foods as well as education opportunities through such avenues as school gardening, cooking lessons, and farm field trips. Through community-driven approaches, farm to school implementation differs by location but always includes one or more of the following core elements: procurement, education, and school gardens.

WHY

Why does it matter?

Farm to school not only connects kids with locally grown food and food and nutrition education, it can foster community connections. In light of rising obesity rates and food insecurity among youth, the farm to school movement is as crucial as ever to building healthy futures for Montana's youngest citizens.



of students ate vegetables one or more times per day in the past seven days, according to the 2019 Montana Youth Risk Behavior Survey.



An estimated **16.1%** of Montana children faced food insecurity in 2019, meaning they do not know how they will get their next meal.

43.8%

of Montana students are eligible for free and reduced-price meals



58.3



is the average age of farmers in Montana, according to the 2017 Census of Agriculture. By connecting children with agriculture and exposing them to agricultural careers, farm to school initiatives are helping to prepare the next generation of farmers.

Montana Farm to School Leadership Team

The Montana Farm to School Leadership Team works through partnerships across the state to build farm to school initiatives that help kids eat healthy, connect with agriculture and nutrition through education, support Montana farmers and food producers, foster economic vitality, and strengthen communities.

The Leadership Team consists of 17 member organizations with statewide focus and influence that are key

to the success of farm to school in Montana. The Leadership Team has 5 working groups: distribution, funding, farm to early childhood education, communication, education, and beef to school. The working groups are open to the public.

The Office of Public Instruction sponsors the Montana Farm to School Leadership Team. The team is facilitated by the Montana Farm to School Coordinator at Montana Team Nutrition Program.

2018 Member Organizations

AERO
Lake County Community Development Corporation
Montana Academy of Nutrition and Dietetics
Montana Department of Agriculture
Montana Department of Livestock
Montana Department of Public Health and Human Services
Montana Farmers Union
Montana FoodCorps
Montana No Kid Hungry
Montana Office of Public Instruction
Montana School Nutrition Association
Montana Team Nutrition Program, Montana State University
Montana State University Extension
National Center for Appropriate Technology
National Farm to School Network
Northern Plains Resource Council
USDA Office of Community Food Systems, Mountain Plains Region

Montana Harvest of the Month

Each month, participating sites focus on promoting one locally grown item (e.g., lentils) by serving it in at least one meal or snack, offering taste tests, conducting educational activities, and displaying or distributing Harvest of the Month materials.



In school year 2018-2019



138

**schools and
afterschool programs**

41 
early care and education sites

3,679

**children reached at
K-12 and ECE sites**



111+

local food producers

\$422,058

**local foods purchased
(not including fluid milk)**

Montana Crunch Time



Farm to School Month

Montana Crunch Time is a statewide event to celebrate National Farm to School Month and 'buy local' initiatives in Montana by crunching into locally and regionally grown apples on a designated day in October.



**people participated in
Montana Crunch Time 2018**

Training + Resources

12
Trainings in
2018-2019

There are many ways to learn about farm to school and access resources! We host farm to school webinars and in-person trainings as well as an archive of previous webinars on the Montana Farm to School website.

43.75
Hours

The Montana Farm to School Summit is a statewide biennial convening geared toward farm to school stakeholders such as school administrators, school nutrition professionals, parents, and food producers around Montana. In 2018, 198 people attended the summit in Missoula.

SOCIAL MEDIA OUTREACH



@montanafarmtoschool

762 likes during the
2018-19 school year



@mtfarmtoschool

766 likes during the
2018-19 school year



MT Team Nutrition and
Montana Harvest of the Month

1,332 views during the
2018-19 school year

GET INVOLVED + CONTACT

Website

Find resources and information at:
www.montana.edu/mtfarmtoschool

Contact Us

Aubree Roth, Montana Farm to School Coordinator
Montana Team Nutrition Program,
Montana State University

aubree.roth@montana.edu
(406) 994-5996

SOURCES

National School Lunch Program Annual Sponsor Agreement
Form 2018-2019, Montana Office of Public Instruction

2019 Montana Youth Risk Behavior Survey,
Montana Office of Public Instruction

Map the Meal Gap: Child Food Insecurity 2019, Feeding America

2017 Census of Agriculture, USDA National Agriculture
Statistics Service

Montana Farm to School Leadership Team Participation 2018,
Montana Team Nutrition

Montana Harvest of the Month Participation 2018-2019,
Montana Team Nutrition Program

Montana Crunch Time Participation 2018,
Montana Team Nutrition

Montana Farm to School Professional Development
and Technical Assistance Tracker 2018-2019,
Montana Team Nutrition

Montana Farm to School Summit Participation 2018,
Montana Team Nutrition

This institution is an equal opportunity provider and employer.

